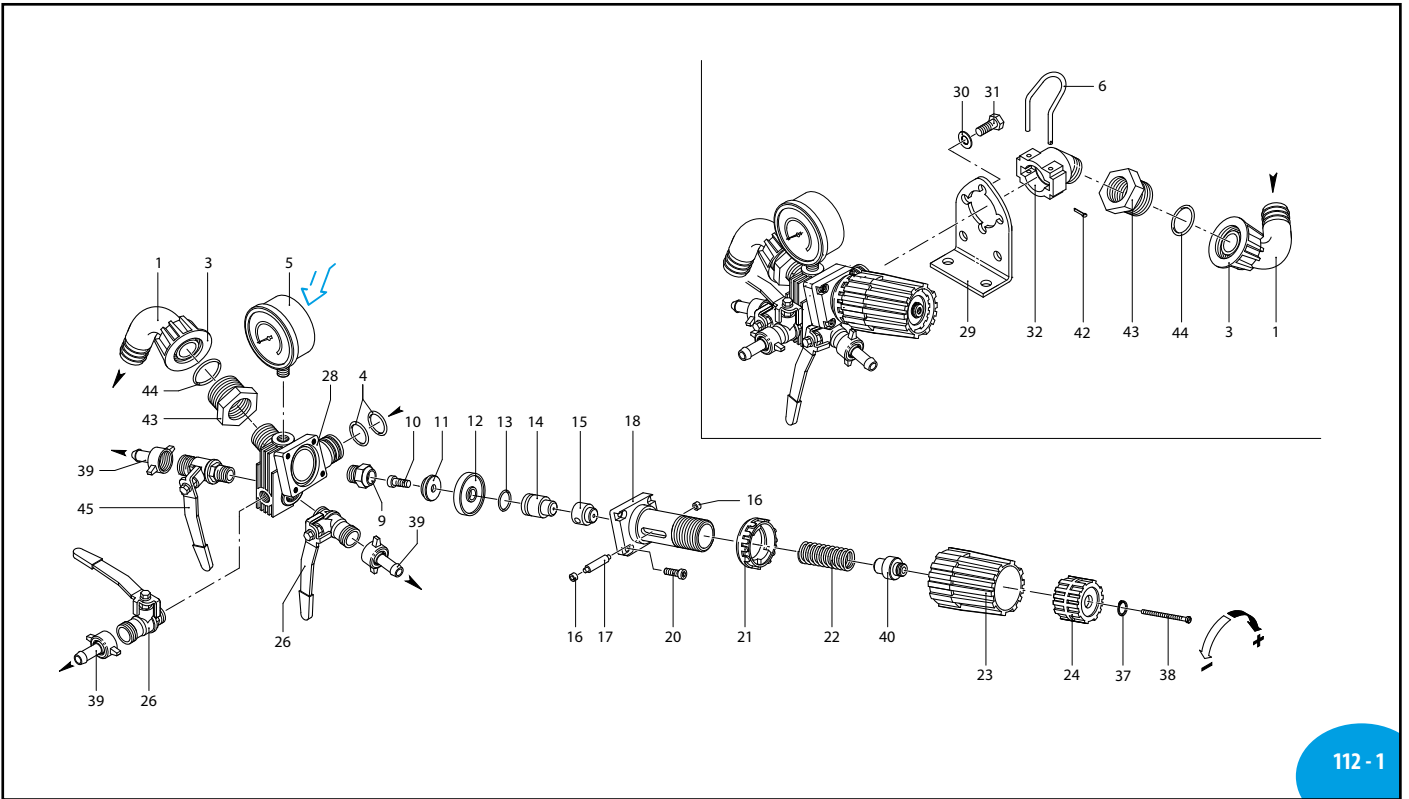


| | |
|---------|-----------|
| per/for | AR 70 bp |
| | AR 115 bp |

| | |
|---------|-----|
| RM 20 S | 927 |
|---------|-----|

115 Series

CM 1158600

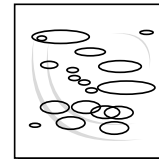


112 - 1

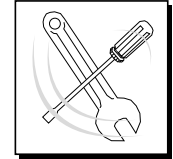
UN970176-LJ

| Pos | Cod. | Descrizione | Description | Q.ty | Note |
|-----|---------|----------------------------------|----------------|------|------------------------|
| 1 | 550370 | Curva Ø 25 | Elbow | 2 | |
| 3 | 550880 | Girello 1" G | Ring nut | 2 | |
| 4 | 390180 | Guarnizione OR Ø 18,72x2,62 | O-ring | 2 | ▶ |
| 5 | 391240 | Manometro Ø63 | Pressure gauge | 1 | 0-24 bar ◀ |
| 6 | 1040690 | Forcella | Fork | 1 | |
| 9 | 1150520 | Sede | Seat | 1 | ◀ C ₂₀ |
| 10 | 680560 | Vite TCEI M6x16 | Screw | 1 | Inox ◀ C ₁₀ |
| 11 | 1040640 | Valvola | Valve | 1 | Inox |
| 12 | 1040631 | Membrana | Diaphragm | 1 | NBR |
| 13 | 1040630 | Membrana | Diaphragm | 1 | Desmopan (opt.) |
| 14 | 880830 | Guarnizione OR Ø 15,54x2,62 | O-ring | 1 | ▶ |
| 15 | 1040621 | Pistone | Piston | 1 | |
| 16 | 1150560 | Distanziale | Spacer | 1 | |
| 17 | 1150600 | Anello | Ring | 2 | |
| 18 | 1150540 | Perno | Hub pin | 1 | |
| 20 | 1150510 | Corpo superiore | Body | 1 | ☒ |
| 21 | 780330 | Vite TCEI M6x20 | Screw | 4 | C ₁₀ |
| 22 | 1150530 | Ghiera | Ring nut | 1 | ☒ |
| 23 | 1150680 | Molla | Spring | 1 | ☒ |
| 24 | 1150550 | Manopola | Knob | 1 | Rossa |
| 26 | 1150570 | Ghiera | Ring nut | 1 | |
| 28 | 130491 | Rubinetto | Valve | 2 | ◀ C ₂₀ |
| 29 | 1150500 | Corpo valvola | Valve body | 1 | |
| 30 | 1150590 | Staffa | Bracket | 1 | |
| 31 | 390311 | Rondella | Washer | 2 | |
| 32 | 180431 | Vite TE M8x16 | Screw | 2 | C ₂₀ |
| 37 | 1040770 | Raccordo | Fitting | 1 | |
| 38 | 480550 | Anello seeger Øe 12 | Ring | 1 | |
| 39 | 1150650 | Vite TCTC M3x60 | Screw | 1 | ◀ C ₅ |
| 40 | 110131 | Girello 1/2" | Ring nut | 3 | |
| 42 | 1150660 | Distanziale | Spacer | 1 | |
| 43 | 1040950 | Copiglia | Split pin | 1 | |
| 44 | 800720 | Raccordo 3/4" G - 1" G F-M | Fitting | 2 | |
| 45 | 550350 | Guarnizione OR Ø 23,81x2,62 | O-ring | 2 | ▶ |
| | 130492 | Rubinetto 3/8" G - 1/2" G M-M SX | Valve | 1 | ◀ C ₂₀ |

sp_rm20s.pdf



| KIT 2382 OR O-Rings | |
|---------------------------|------|
| Pos. | Q.ty |
| 4 | 2 |
| 13 | 1 |
| 44 | 2 |



| KIT 2383 Pronto intervento (NBR) Maintenance repair | | | |
|---|------|------|------|
| Pos. | Q.ty | Pos. | Q.ty |
| 4 | 2 | 22 | 1 |
| 6 | 1 | 23 | 1 |
| 9 | 1 | 24 | 1 |
| 11 | 1 | 37 | 1 |
| 12 | 1 | 38 | 1 |
| 13 | 1 | 40 | 1 |
| 15 | 1 | 42 | 1 |
| 17 | 1 | 44 | 2 |
| 21 | 1 | | |



Posizione targa di identificazione.
Pump and manufacturer identification.