



BLUE[®]
CLEAN

Idropultrici Alta Pressione

High Pressure Washers

CLASSIC

BLUE

Dal 1958 nel settore delle pompe ad alta pressione

In the high pressure pump sector since 1958



Oltre cinquant'anni d'esperienza nel settore delle pompe ad alta pressione, l'elevato know-how acquisito, la costante ricerca di soluzioni innovative, unitamente ad un marketing accurato, sempre attento ai bisogni del cliente e ai mutamenti del mercato, hanno portato **Annovi Reverberi** al lancio di **AR Blue Clean**: un nuovo brand, un progetto che si rivolge al cleaning con sempre più forza. La nuova gamma di idropulitrici **AR Blue Clean** è il risultato di una meticolosa cura del design e di un continuo sforzo volto al rinnovamento del prodotto. Tanti modelli per andare incontro ad ogni tipo di esigenza di lavaggio, tutti caratterizzati da estrema maneggevolezza, prestazioni elevate, sicurezza e qualità inalterate nel tempo. Le idropulitrici **AR Blue Clean** sono corredate da una vasta gamma di accessori appositamente studiati per rendere ogni macchina estremamente versatile e pronta per risolvere ogni problema di pulizia.



*Fifty years' experience in the high pressure pump sector, the wealth of accumulated know-how, constant research into innovative designs, and marketing always oriented towards customers' needs and the changing market, have led **Annovi Reverberi** to launch **AR Blue Clean**: a new brand and a new project for the cleaning sector, with ever-increasing power. The new **AR Blue Clean** range of power-jet cleaners is the outcome of painstaking design and our unstinting commitment to product renewal. An array of models to meet all cleaning requirements, all extremely easy to handle and offering high performance, safety and quality that stand the test of time. **AR Blue Clean** power-jet cleaners have a vast range of tailor-made accessories, making every machine extremely versatile and ready to solve all cleaning problems.*

1- Sede centrale di Modena
Modena headquarters

2- Stabilimento di Bomporto
Bomporto plant

3- Centro logistico (Bomporto)
Logistics Centre (Bomporto)

4- Filiale di Minneapolis, MN (USA)
North American Branch, Minneapolis, MN (USA)

5- Stabilimento di Shanghai (PRC)
Shanghai plant (PRC)



**BLUE
CLEAN**®

Classic Blue

Indice
Index

1 Series	1 Series	3 Series	3 Series
<i>116 Classic</i>	<i>142 Classic</i>	<i>371 Classic</i>	<i>375 Classic</i>
			
4	5	6	7

4 Series	4 Series	4 Series	4 Series	Accessories
<i>471 Classic</i>	<i>475 Classic</i>	<i>479 Classic</i>	<i>490 Classic</i>	<i>Classic</i>
				
8	9	10	11	12-15





1 Series 116 Classic



Acqua fredda
Cold water



Per uso occasionale
For occasional usage







Attacco
connessione rapida
Quick connection

TSS[®]
Total Stop
SYSTEM

Caratteristiche Generali - General Features:

- Pompa a 3 pistoni assiali comandati dal piattello oscillante, testa in alluminio
- Pistoni in acciaio inox temperato
- Valvola di sicurezza automatica con azzeramento della pressione nella testa pompa
- Sistema di arresto totale dell' idropulitrice a distanza
- Protezione termica del motore
- Filtro acqua ispezionabile
- Lunghezza cavo elettrico 5 m
- 3 Axial stainless steel pistons wobble-plate pump with aluminium head
- Tempered stainless steel pistons
- Automatic by-pass valve with pump head pressure discharge
- Remote control for total shut-down of high pressure washer
- Motor thermal protector
- Inspectable water filter
- Electric cable length 5 m

Fornito con - Equipped with:

Pistola Trigger gun (41559)		Kit schiumogeno con serbatoio Foam lance bottle (41570)	
Lancia con getto regolabile Lance with adjustable spray nozzle (50955)		Tubo AP HP hose 3 m (3081300)	



Elettropompa con pompa con testa in alluminio e motore con protezione termica

Electric motorpump with aluminium head pump and electric motor with thermal protector



Dati Tecnici / Technical Data

MOD	COD	MAX		It/h		⚡			kg	
		bar	psi	lt/h	gph	kw	rpm	Hz	V	kg
116	13865	100	1500	360	95	1,3	3400	50-60	220-240~	4,5

Temperatura massima acqua / Max inlet water temperature
50°C 122°F IPX5-S1

Grandezze logistiche / Logistical Data

EAN code	Dimensione scatola Box dimensions (L x W x H) cm	Q.ty Europallet (800x1200 mm)	Container		Camion Full Truck	kg
			20 ft	40 ft		Lordo/Gross
8016287138659	24,5x23x47	60	1076	2195	1980	6,4



Portatile
Portable



Porta accessori
Accessories holder



Filtro ingresso acqua ispezionabile
Inspectable water intake filter



1 Series 142 Classic



Acqua fredda
Cold water



Per uso occasionale
For occasional usage



Attacco
connessione rapida
Quick connection

TSS[®]
Total Stop
SYSTEM

Caratteristiche Generali - General Features:

- Carrello a 2 ruote completo di manico
- Pompa a 3 pistoni assiali comandati dal piattello oscillante, testa in alluminio
- Pistoni in acciaio inox temperato
- Valvola di sicurezza automatica con azzeramento della pressione nella testa pompa
- Sistema di arresto totale dell' idropulitrice a distanza
- Protezione termica del motore
- Filtro acqua ispezionabile
- Lunghezza cavo elettrico 5 m
- Two-wheel trolley with handle
- 3 Axial stainless steel pistons wobble-plate pump with aluminium head
- Tempered stainless steel pistons
- Automatic by-pass valve with pump head pressure discharge
- Remote control for total shut-down of high pressure washer
- Motor thermal protector
- Inspectable water filter
- Electric cable length 5 m

Fornito con - Equipped with:

Pistola Trigger gun (41559)		Kit schiumogeno con serbatoio Foam lance bottle (41570)	 (0,5 lt)
Lancia con getto regolabile Lance with adjustable spray nozzle (50955)		Tubo AP HP hose 5 m (3082290)	



Elettropompa con pompa con testa in alluminio e motore con protezione termica

Electric motorpump with aluminium head pump and electric motor with thermal protector



Dati Tecnici / Technical Data

MOD	COD	MAX		It/h		⚡		kg Netto/Net		
		bar	psi	lt/h	gph	kw	rpm		Hz	V
142	13866	120	1750	370	98	1,4	3400	50-60	220-240~	5,5

Temperatura massima acqua / Max inlet water temperature
50°C 122°F IPX5-S1

Grandezze logistiche / Logistical Data

EAN code	Dimensione scatola Box dimensions (L x W x H) cm	Q.ty Europallet (800x1200 mm)	Container		Camion Full Truck	kg Lordo/Gross
			20 ft	40 ft		
8016287138666	25x24,5x47	48	980	2020	1584	7,3



Portatile
Portable



Porta accessori
Accessories holder



Battistrada in gomma
Rubber wheels

Filtro acqua ispezionabile
Inspectable water filter



3 Series 371 Classic



Acqua fredda
Cold water



Per uso quasi frequente
For almost frequent usage









Lancia getto rotante
Rotary lance

TSS[®]
Total Stop
SYSTEM

Caratteristiche Generali - General Features:

- Carrello a 2 ruote completo di manico
- Pompa a 3 pistoni assiali comandati dal piattello oscillante, testa alluminio
- Pistoni in acciaio inox temperato
- Valvola di sicurezza automatica con azzeramento della pressione nella testa pompa
- Sistema di arresto totale dell' idropulitrice a distanza
- Protezione termica del motore
- Filtro acqua ispezionabile
- Lunghezza cavo elettrico 5 m
- Two-wheel trolley with handle
- 3 Axial stainless steel pistons wobble-plate pump with aluminium head
- Tempered stainless steel pistons
- Automatic by-pass valve with pump head pressure discharge
- Remote control for total shut-down of high pressure washer
- Motor thermal protector
- Inspectable water filter
- Electric cable length 5 m

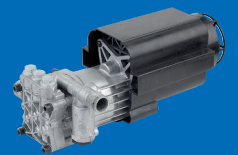
Fornito con - Equipped with:

Pistola Trigger gun (50968)		Kit schiumogeno con serbatoio Foam lance bottle (41570)	
Lancia con getto regolabile Lance with adjustable spray nozzle (41568)		Tubo AP 6 m (PVC) HP hose 6 m (PVC) (41562)	
Lancia con getto rotante Rotary lance (41567)		Mini Patio (41156)	



Elettropompa con pompa a testa in alluminio e motore con protezione termica

Electric motorpump with aluminium head pump and electric motor with thermal protector



Dati Tecnici / Technical Data

MOD	COD	MAX		It/h		⚡		kg Netto/Net		
		bar	psi	lt/h	gph	kw	rpm		Hz	V
371	13862	130	1900	420	111	1,8	3400	50-60	220-240~	9,5

Temperatura massima acqua / Max inlet water temperature
50°C 122°F IPX5-S1

Grandezze logistiche / Logistical Data

EAN code	Dimensione scatola Box dimensions (L x W x H) cm	Q.ty Europallet (800x1200 mm)	Container		Camion Full Truck	kg Lordo/Gross
			20 ft	40 ft		
8016287138628	32,5x29,2x65	24	445	918	792	10,8



Portatile
Portable



Porta accessori
Accessories holder

Battistrada in gomma
Rubber wheels



Filtro acqua ispezionabile
Inspectable water filter



3 Series 375 Classic



Acqua fredda
Cold water



Per uso quasi frequente
For almost frequent usage



Lancia getto rotante
Rotary lance

TSS[®]
Total Stop
SYSTEM

Caratteristiche Generali - General Features:

- Carrello a 2 ruote completo di manico
- Pompa a 3 pistoni assiali comandati dal piattello oscillante, testa alluminio
- Pistoni in acciaio inox temperato
- Valvola di sicurezza automatica con azzeramento della pressione nella testa pompa
- Sistema di arresto totale dell' idropulitrice a distanza
- Protezione termica del motore
- Aspirazione detergente incorporata
- Capacità del serbatoio detergente 1 l
- Filtro acqua ispezionabile
- Lunghezza cavo elettrico 5 m
- Two-wheel trolley with handle
- 3 Axial stainless steel pistons wobble-plate pump with aluminium head
- Tempered stainless steel pistons
- Automatic by-pass valve with pump head pressure discharge
- Remote control for total shut-down of high pressure washer
- Motor thermal protector
- Built-in detergent tank for direct suction
- Detergent tank capacity 1 l
- Inspectable water filter
- Electric cable length 5 m

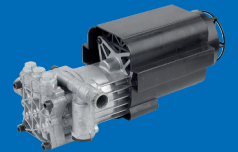
Fornito con - Equipped with:

Pistola Trigger gun (41561)		Testina getto regolabile Adjustable jet nozzle (43984)	
Prolunga lancia Lance extension (41563)		Testina getto rotante Rotary jet nozzle (41565)	
Tubo AP 6 m HP hose 6 m (41562)		Mini Patio (3084354)	



Elettropompa con pompa con testa in alluminio e motore con protezione termica

Electric motorpump with aluminium head pump and electric motor with thermal protector



Dati Tecnici / Technical Data

MOD	COD	MAX		lit/h		⚡		kg Netto/Net		
		bar	psi	lt/h	gph	kw	rpm		Hz	V
375	14327	140	2000	440	119	1,8	3400	50-60	220-240~	8,7

Temperatura massima acqua / Max inlet water temperature
50°C 122°F IPX5-S1

Grandezze logistiche / Logistical Data

EAN code	Dimensione scatola Box dimensions (L x W x H) cm	Q.ty Europallet (800x1200 mm) n°	Container		Camion Full Truck n°	kg Lordo/Gross
			20 ft	40 ft		
8016287143271	35x32x58	18	448	924	594	10,7





4 Series 471 Classic



Acqua fredda
Cold water



Per uso quasi frequente
For almost frequent usage



Lancia getto rotante
Rotary lance

TSS[®]
Total Stop
SYSTEM

Caratteristiche Generali - General Features:

- Carrello a 2 ruote completo di manico
- Pompa a 3 pistoni assiali comandati dal piattello oscillante, testa alluminio
- Pistoni in acciaio inox temperato
- Valvola di sicurezza automatica con azzeramento della pressione nella testa pompa
- Sistema di arresto totale dell' idropulitrice a distanza
- Protezione termica del motore
- Filtro acqua ispezionabile
- Lunghezza cavo elettrico 5 m
- Two-wheel trolley with handle
- 3 Axial stainless steel pistons wobble-plate pump with aluminium head
- Tempered stainless steel pistons
- Automatic by-pass valve with pump head pressure discharge
- Remote control for total shut-down of high pressure washer
- Motor thermal protector
- Inspectable water filter
- Electric cable length 5 m

Fornito con - Equipped with:

Pistola
Trigger gun
(50968)



Kit schiumogeno con serbatoio
Foam lance bottle
(41570)



Lancia con getto regolabile
Lance with adjustable spray nozzle
(3084440)



Tubo AP 6 m (PVC)
HP hose 6 m (PVC)
(41562)



Lancia con getto rotante
Rotary lance
(41567)

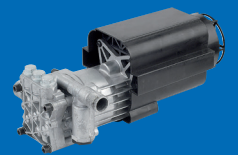


Mini Patio
(41156)



Elettropompa con pompa con testa in alluminio e motore con protezione termica

Electric motorpump with aluminium head pump and electric motor with thermal protector



Dati Tecnici / Technical Data

MOD	COD	MAX		It/h		⚡		kg Netto/Net		
		bar	psi	lt/h	gph	kw	rpm		Hz	V
471	13863	160	2300	480	127	2,1	3400	50-60	220-240~	10,2

Temperatura massima acqua / Max inlet water temperature
50°C 122°F IPX5-S1

Grandezze logistiche / Logistical Data

EAN code	Dimensione scatola Box dimensions (L x W x H) cm	Q.ty Europallet (800x1200 mm)	Container		Camion Full Truck	kg Lordo/Gross
			20 ft	40 ft		
8016287138635	32,5x29,2x65	24	445	918	792	11





4 Series 475 Classic



Acqua fredda
Cold water



Per uso quasi frequente
For almost frequent usage



Lancia getto rotante
Rotary lance

TSS[®]
Total Stop
SYSTEM

Caratteristiche Generali - General Features:

- Carrello a 2 ruote completo di manico
- Pompa a 3 pistoni assiali comandati dal piattello oscillante, testa alluminio
- Pistoni in acciaio inox temperato
- Valvola di sicurezza automatica con azzeramento della pressione nella testa pompa
- Sistema di arresto totale dell' idropulitrice a distanza
- Protezione termica del motore
- Aspirazione detergente incorporata
- Capacità del serbatoio detergente 1 l
- Filtro acqua ispezionabile
- Lunghezza cavo elettrico 5 m
- Two-wheel trolley with handle
- 3 Axial stainless steel pistons wobble-plate pump with aluminium head
- Tempered stainless steel pistons
- Automatic by-pass valve with pump head pressure discharge
- Remote control for total shut-down of high pressure washer
- Motor thermal protector
- Built-in detergent tank for direct suction
- Detergent tank capacity 1 l
- Inspectable water filter
- Electric cable length 5 m

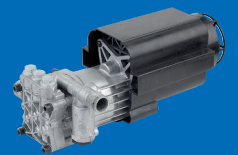
Fornito con - Equipped with:

Pistola Trigger gun (41561)		Testina getto regolabile Adjustable jet nozzle (43985)	
Prolunga lancia Lance extension (41563)		Testina getto rotante Rotary jet nozzle (41565)	
Tubo AP 8 m HP hose 8 m (4102400)		Mini Patio (3084354)	



Elettropompa con pompa con testa in alluminio e motore con protezione termica

Electric motorpump with aluminium head pump and electric motor with thermal protector



Dati Tecnici / Technical Data

MOD	COD	MAX		lit/h		⚡		kg		
		bar	psi	lt/h	gph	kw	rpm	Hz	V	kg
475	14328	160	2300	480	127	2	3400	50-60	220-240~	10,2

Temperatura massima acqua / Max inlet water temperature
50°C 122°F IPX5-S1

Grandezze logistiche / Logistical Data

EAN code	Dimensione scatola Box dimensions (L x W x H) cm	Q.ty Europallet (800x1200 mm)	Container		Camion Full Truck	kg
			20 ft	40 ft		Lordo/Gross
8016287143288	48x32,1x52,5	20	336	672	660	11,8



Portatile
Portable



Porta accessori
Accessories holder

Battistrada in gomma
Rubber wheels



Filtro acqua ispezionabile
Inspectable water filter



4 Series 479 Classic



Acqua fredda
Cold water



Per uso quasi frequente
For almost frequent usage



Lancia getto rotante
Rotary lance

TSS[®]
Total Stop
SYSTEM

Caratteristiche Generali - General Features:

- Carrello a 2 ruote completo di manico
- Pompa a 3 pistoni assiali comandati dal piattello oscillante, testa alluminio
- Pistoni in acciaio inox temperato
- Valvola di sicurezza automatica con azzeramento della pressione nella testa pompa
- Sistema di arresto totale dell' idropulitrice a distanza
- Protezione termica del motore
- Aspirazione detergente incorporata
- Capacità del serbatoio detergente 1 l
- Filtro acqua ispezionabile
- Lunghezza cavo elettrico 5 m
- Two-wheel trolley with handle
- 3 Axial stainless steel pistons wobble-plate pump with aluminium head
- Tempered stainless steel pistons
- Automatic by-pass valve with pump head pressure discharge
- Remote control for total shut-down of high pressure washer
- Motor thermal protector
- Built-in detergent tank for direct suction
- Detergent tank capacity 1 l
- Inspectable water filter
- Electric cable length 5 m

Fornito con - Equipped with:

Pistola
Trigger gun
(41561)



Testina getto regolabile
Adjustable jet nozzle
(43985)



Prolunga lancia
Lance extension
(41563)



Testina getto rotante
Rotary jet nozzle
(41565)



Tubo AP 8 m
HP hose 8 m
(4102400)

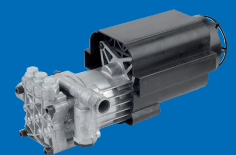


Mini Patio
(3084354)



Elettropompa con pompa con testa in alluminio e motore con protezione termica

Electric motorpump with aluminium head pump and electric motor with thermal protector



Dati Tecnici / Technical Data

MOD	COD	MAX		lit/h		⚡		kg Netto/Net		
		bar	psi	lt/h	gph	kw	rpm		Hz	V
479	14440	170	2400	480	127	2,2	3400	50-60	220-240~	10,4

Temperatura massima acqua / Max inlet water temperature
50°C 122°F IPX5-S1

Grandezze logistiche / Logistical Data

EAN code	Dimensione scatola Box dimensions (L x W x H) cm	Q.ty Europallet (800x1200 mm)	Container		Camion Full Truck	kg Lordo/Gross
			20 ft	40 ft		
8016287144407	48x32,1x52,5	20	336	672	660	12



Portatile
Portable



Porta accessori
Accessories holder

Battistrada in gomma
Rubber wheels



Filtro acqua ispezionabile
Inspectable water filter



4 Series 490 Classic



Acqua fredda
Cold water



Per uso frequente
For frequent usage



Lancia getto rotante
Rotary lance



Accessori professionali
Professional accessories

TSS[®]
Total Stop
SYSTEM

Caratteristiche Generali - General Features:

- Carrello a due ruote completo di manico ed avvolgitubo (Tubo armato AP 8 m)
- Pompa a 3 pistoni assiali comandati dal piattello oscillante, testa alluminio
- Pistoni in acciaio inox temperato
- Valvola di sicurezza automatica con azzeramento della pressione nella testa pompa
- Sistema di arresto totale dell' idropulitrice a distanza
- Manometro
- Motore elettrico monofase a induzione con protezione termica
- Aspirazione detergente incorporata e regolabile
- Capacità del serbatoio detergente 1,2 l
- Testina selezione alta e bassa pressione, getto concentrato od a ventaglio
- Filtro acqua ispezionabile
- Lunghezza cavo elettrico 5 m
- Two-wheel trolley with handle and hose reel (Reinforced 8 m HP hose)
- 3 Axial stainless steel pistons wobble-plate pump with aluminium head
- Tempered stainless steel pistons
- Automatic by-pass valve with pump head pressure discharge
- Remote control for total shut-down of high pressure washer
- Pressure gauge
- Single-phase induction motor with thermal protector
- Built-in detergent tank for direct suction and adjustable detergent injector
- Detergent tank capacity 1.2 l
- High and low pressure and pencil or fan jet selector nozzle
- Inspectable water filter
- Electric cable length 5 m



Fornito con - Equipped with:

Pistola
Trigger gun
(41571)



Lancia con getto rotante
Rotary lance
(41575)



Lancia con getto regolabile
Lance with adjustable spray nozzle
(41572)



Tubo HP armato 8m
8m Reinforced HP hose
(43986)



Elettropompa con pompa con testa in alluminio e motore ad induzione con protezione termica

Electric motorpump with aluminium head pump and induction electric motor with thermal protection



Dati Tecnici / Technical Data

MOD	COD	MAX		lit/h		V		kg Netto/Net		
		bar	psi	lt/h	gph	kw	rpm		Hz	
490	13087	140	2050	420	111	2,1	2800	50	230~	18,8

Temperatura massima acqua / Max inlet water temperature
50°C 122°F IPX5-S1

Grandezze logistiche / Logistical Data

EAN code	Dimensione scatola Box dimensions (L x W x H) cm	Q.ty Europallet (800x1200 mm)	Container		Camion Full Truck	kg Lordo/Gross
			20 ft	40 ft		
8016287130875	40x35x86,8	12	200	460	396	21,5



Avvolgitubo in pressione
In pressure hose reel



Porta accessori
Accessories holder



Battistrada in gomma
Rubber wheels

Filtro acqua ispezionabile
Inspectable water filter



1.3.4 Series

Accessori Accessories

		1 Series		3 Series		4 Series			
		116	142	371	375	471	475	479	490
Pistola Trigger gun		41559	S S						
		50968*		S	S				
		41561			S	S S			
		41571						S	
Prolunga lancia Lance extension		41563		S	S S				
Testina getto regolabile Adjustable jet nozzle		43984		S					
		43985				S S			
Testina getto rotante Rotary jet nozzle		41565		S	S S				

		1 Series		3 Series		4 Series			
		116	142	371	375	471	475	479	490
Lancia getto regolabile Lance with adjustable spray nozzle		50955*	S S						
		41568		S					
		3084440*				S			
Lancia getto rotante Rotary lance		41572							S
		41567		S	S				
		41575							S
Tubo AP 3 m Hose HP 3m		3081300*	S						
Tubo AP 5 m Hose HP 5m		3082290*		S					
Tubo AP 6 m Hose HP 6m		41562		S S S					
Tubo AP 8 m Hose HP 8m		4102400*					S S		
Tubo armato AP 8 m Reinforced HP hose 8 m		43986							S
Prolunga tubo 8m Extension hose 8m		41585	O O						
Prolunga tubo 8m Extension hose 8m		41586		O O O O O					
Prolunga tubo armato 8m Reinforced extension hose 8m		41587							O
Schiumogeno con serbatoio Foam lance bottle		41570	S S S		S				
Kit schiumogeno alta pressione High pressure foam lance bottle		46343	O O O O O O O						







Gli accessori standard e opzionali verranno forniti in versione appendibile cravatta
All standard and optional accessories are supplied in this hanging pack version
















* Accessori forniti senza cravatta
Accessories supplied without hanging pack



1.3.4 Series

Accessori Accessories

		1 Series		3 Series		4 Series			
		116	142	371	375	471	475	479	490
Schiumogeno con serbatoio <i>Foam lance bottle</i>		46345							○
Lancia multifunzione <i>Multifunction lance</i>		46349	○	○					
		46350		○	○				
		4102270*				○	○		
		46352							○
Kit pulizia tubazioni <i>Pipe drain kit</i>		41588 (10 m)	○	○	○	○	○	○	○
		41693 (16 m)	○	○	○	○	○	○	○
		43827 (8 m)	○	○	○	○	○	○	○
Spazzola <i>Brush</i>		Fissa 41577	○	○	○	○	○	○	○
		Rotante 41578	○	○	○	○	○	○	○
Spazzola per testina <i>Head brush</i>		46353		○		○	○	○	
Mini Patio Ø 250mm		41579	○	○	S	○	S	○	○
		3084354			S		S	S	
Patio Deluxe Chem Ø 300mm		41581	○	○	○	○	○	○	○
Patio Deluxe Reg Ø 300mm		46358	○	○	○	○	○	○	○
Spazzola lavante <i>Power brush</i>		46361	○	○	○	○	○	○	○
Testina 5 in 1 <i>5 in 1 nozzle</i>		46339		○					
		4102330*				○			
		4102320*						○	











		1 Series		3 Series		4 Series			
		116	142	371	375	471	475	479	490
Kit lancia sabbiane <i>Sandblasting lance kit</i>		41760	○	○	○	○	○	○	○
		41591							○
Sabbia calibrata e filtrata <i>Calibrated, filtered sand</i>		3207 (5 Kg)	○	○	○	○	○	○	○
		41770 (25 Kg)	○	○	○	○	○	○	○
Kit aspirazione acqua <i>Water suction kit</i>		41592	○	○	○	○	○	○	○
Kit lancia sottoscocca DRS <i>Underbody lance kit DRS</i>		41755	○	○	○	○			
		43654							○
Kit adattatore lancia sottoscocca <i>Underbody lance adapter kit</i>		46009			○		○	○	
Kit prolunga lancia <i>Extension lance kit</i>		46355	○	○	○	○	○	○	○
									
Kit adattatori <i>Adapters kit</i>		41758	○	○	○	○	○	○	○
Kit adattatori accessori <i>Accessories adapters kit</i>		41890	○	○	○	○	○	○	○
Filtro acqua ispezionabile <i>Inspectable water filter (pcs 3)</i>		41663	S	S	S	S	S	S	S
Kit filtro acqua <i>Water filter kit</i>		41593	○	○	○	○	○	○	○
Kit attacco rapido <i>Click fast kit</i>		41580	○	○	○	○	○	○	○



1.3.4 Series

Accessori Accessories

Detergenti
Detergents

		1 Series	2 Series	3 Series	4 Series				
		116	142	371	375	471	475	479	490
	Universale Universal (41870)	○	○	○	○	○	○	○	○
	Moto Bikes (41871)	○	○	○	○	○	○	○	○
	Barche / Boats Auto / Cars (41872)	○	○	○	○	○	○	○	○
	Tende da sole Awnings (43483)	○	○	○	○	○	○	○	○
	Erba sintetica Synthetic grass (43484)	○	○	○	○	○	○	○	○
	Pannelli solari Solar panels (43485)	○	○	○	○	○	○	○	○
	Muri / Walls Pietre / Stones (43486)	○	○	○	○	○	○	○	○
	Superfici in Decking Wood surfaces (43487)	○	○	○	○	○	○	○	○
	Vetri Glass (43488)	○	○	○	○	○	○	○	○
	Universale Universal (43491)	○	○	○	○	○	○	○	○

Cod. 41588



Cod. 41562



Cod. 43984



Cod. 41578



Cod. 41559



Cod. 41577



Ordine minimo di un singolo codice 5 pezzi
Minimum order q.ty 5 pieces for a single code



Spedizione in cartone avana
Shipped in brown cardboard box



AR Blue Display

AR Blue Clean Detergent Display



Espositore per accessori in metallo - *Metal accessories display:*

Per il vostro punto vendita Annovi Reverberi ha studiato un pratico display in metallo. Solido e compatto, verniciatura a forno, bi facciale, con fascia logo AR Blue Clean.

Vi permetterà di esporre comodamente gli accessori AR Blue Clean.

Annovi Reverberi ha pensato di confezionare poi gli accessori più adatti in pratiche cravatte da appendere all'espositore.

Scegliete nella gamma accessori AR Blue Clean quelli più adatti alle vostre realtà ed alla vostra esperienza e presentateli in modo accattivante ai vostri clienti.

Li potrete ordinare singolarmente in lotti da 5 pezzi, che riceverete confezionati in master pack color avana oppure scegliere tra gli allestimenti Mix 1, Mix 2, Mix 3, Mix 3 Plus che vedete presentati nella pagina a fianco creati per i modelli delle Serie 1, 3, 4 e 5 AR Blue Clean.

Annovi Reverberi has designed a convenient metal display for your retail store. Solid and compact, with stove-painted finish, two-sided, with AR Blue Clean logo band.

The ideal way for you to display all the AR Blue Clean accessories easily and effectively.

What's more, Annovi Reverberi is also packaging the most suitable accessories in special packs for hanging from the display.

Choose the AR Blue Clean range accessories best suited to your business and your experience, and present them to your customers in a fresh, attractive way.

You can order them individually in lots of 5 pieces, delivered packed in a brown master pack, or choose from sets Mix 1, Mix 2, Mix 3, Mix 3 Plus, shown on the facing page, specially created for the AR Blue Clean Series 1, 3, 4 and 5 models.

Dati Tecnici / Technical Data

MOD	COD	DIMENSIONS	kg
		(LxWxH)	kg
AR Blue Display	41669	530x541x2231	26



Espositore per flaconi detergente - *Detergent display:*

Pall-box in cartone ondulato, con stampa in quadricromia e strato di protezione in PVC. Scaffali rinforzati con tubolari in metallo per sostenere un peso cadauno di 15/16 Kg. Nella scatola verrà aggiunta una tasca in cartone bianco porta-depliant da attaccare sul fianco del display. Soluzione perfetta per le corsie dei punti vendita. Crownner e base a marciapiede, con rinforzo, fornito steso.

Corrugated cardboard pall-box with four-colour printing and PVC protective layer. Shelves reinforced with tubular metal struts to support a weight of 15/16 kg each. The box contains a white cardboard brochure holder for fixing to the side of the display. The perfect solution for store aisles. Crownner and plinth base, with stiffener, supplied flat.

Dati Tecnici / Technical Data

MOD	COD	DIMENSIONS	kg	PEZZI ESPOSTI EXPOSED PIECES
		(LxWxH)	kg	N°
Detergent Display	94180	440x305x1580	4,5	64



Leggi il codice e scopri di più
Scan & learn more



**BLUE[®]
CLEAN**

Seguici su / Follow us on



Annovi Reverberi spa

Cleaning Division
Via Aldo Moro 40
41030 Bompporto, Mo (Italy)
Tel +39 059 8199 011
Fax +39 059 8199 000
info@arblueclean.it
www.arblueclean.it

Agriculture & Industry Division
Via Martin L. King 3
41122 Modena (Italy)
Tel +39 059 414 411
Fax +39 059 253 505
infoar@annovireverberi.it
www.annovireverberi.it

AR North America Inc.

140 - 81st Avenue Northeast
Fridley, MN USA 55432
Ph. +1 763 398 2008
Fax +1 763 398 2009
info@arnorthamerica.com
www.arnorthamerica.com

AR China Distribution Co., Ltd

2nd Floor, Building 1, No. 651 Jiangting Rd.
Jinhui Town, Fengxian District, Shanghai
201404 China
Ph. +86 21 54846800
Fax +86 21 54846800 ext 815
info@ar-china.cn
www.ar-china.cn