



Modello 4590

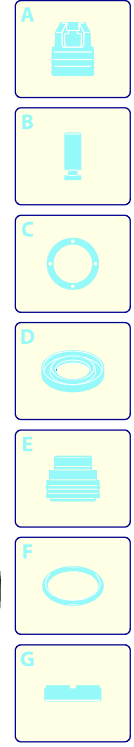
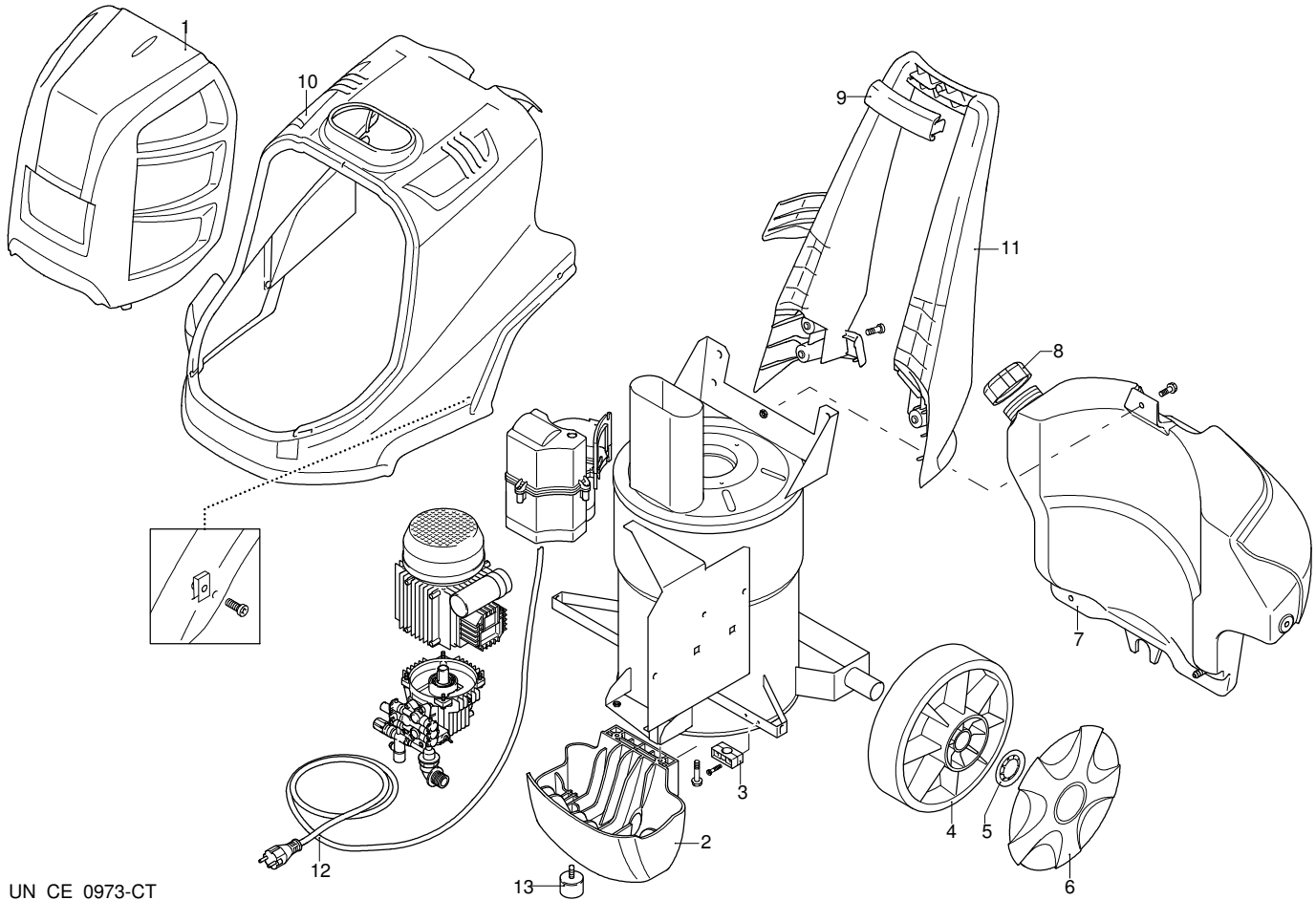
Versione:

Matricola:

Codice: **24426**

17/07/2012

230 V - 50 Hz schuko



| Validità | Pos. | Codice | Denominazione | Q |
|----------|------|---------|---------------|---|
| | 1 | 3520091 | Cofano | 1 |
| | 2 | 3523550 | Piede | 1 |
| | 3 | 3520260 | Passacavo | 1 |
| | 4 | 3520230 | Ruota | 2 |
| | 5 | 3520240 | Rondella | 2 |
| | 6 | 3520254 | Protezione | 2 |
| | 7 | 3520170 | Serbatoio | 1 |
| | 8 | 3520180 | Tappo | 1 |
| | 9 | 3520070 | Manopola | 1 |
| | 10 | 3520081 | Cofano blu | 1 |
| | 11 | 3520060 | Manico | 1 |
| | 12 | 3520870 | Cavo | 1 |
| | 13 | 3523560 | Antivibrante | 1 |

UN_CE_0973-CT



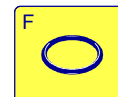
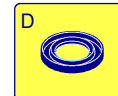
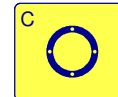
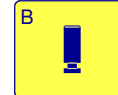
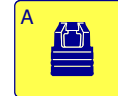
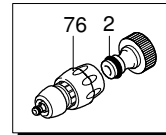
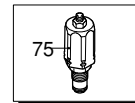
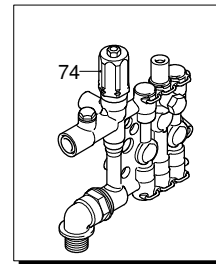
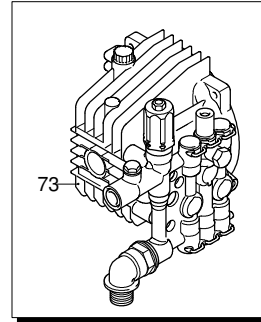
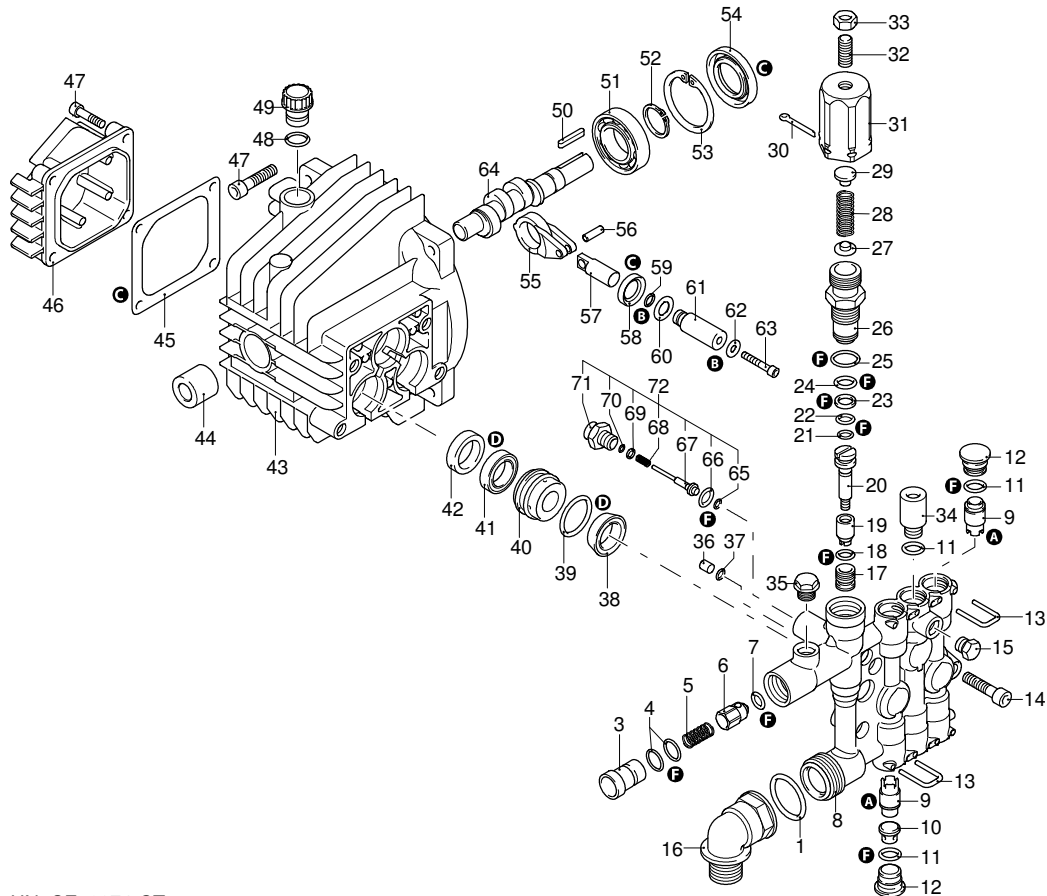
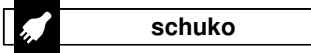
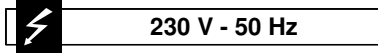
Modello 4590

Versione:

Matricola:

Codice: **24426**

17/07/2012



| Validità | Pos. | Codice | Denominazione | Q |
|----------|------|---------|----------------|---|
| | 1 | 1344970 | Guarnizione OR | 1 |
| | 2 | 3520370 | Raccordo | 1 |
| | 3 | 2901060 | Inietture | 1 |
| | 4 | 800560 | Guarnizione OR | 2 |
| | 5 | 1080091 | Molla | 1 |
| | 6 | 2901070 | Otturatore | 1 |
| | 7 | 1460430 | Guarnizione OR | 1 |
| | 8 | 1344850 | Testa | 1 |
| | 9 | 1349055 | Valvola | 6 |
| | 10 | 1344770 | Distanziale | 3 |
| | 11 | 1465720 | Guarnizione OR | 6 |
| | 12 | 1344800 | Tappo | 5 |
| | 13 | 1344790 | Forcella | 6 |
| | 14 | 850850 | Vite | 4 |
| | 15 | 620301 | Tappo | 1 |
| | 16 | 2500280 | Curva | 1 |
| | 17 | 1342701 | Sede | 1 |
| | 18 | 600180 | Guarnizione OR | 1 |
| | 19 | 1460151 | Pistone | 1 |
| | 20 | 2021900 | Pistone | 1 |
| | 21 | 1080190 | Guarnizione OR | 1 |
| | 22 | 600180 | Guarnizione OR | 1 |
| | 23 | 1080401 | Anello | 1 |
| | 24 | 820510 | Guarnizione OR | 1 |
| | 25 | 740290 | Guarnizione OR | 1 |
| | 26 | 1344870 | Guida pistone | 1 |
| | 27 | 1343450 | Piattello | 1 |
| | 28 | 1460190 | Molla | 1 |
| | 29 | 1980220 | Piattello | 1 |
| | 30 | 2500550 | Copiglia | 1 |
| | 31 | 1344881 | Inserito | 1 |
| | 32 | 1980740 | Tappo | 1 |
| | 33 | 1060120 | Dado | 1 |
| | 34 | 1345020 | Tappo | 1 |
| | 35 | 620301 | Tappo | 1 |
| | 36 | 1344890 | Tappo | 1 |
| | 37 | 2560870 | Guarnizione OR | 1 |
| | 38 | 2460180 | Tenuta acqua | 3 |
| | 39 | 770260 | Guarnizione OR | 3 |
| | 40 | 1344750 | Guida pistone | 3 |
| | 41 | 1260440 | Tenuta acqua | 3 |
| | 42 | 1344760 | Anello | 3 |
| | 43 | 1344050 | Corpo pompa | 1 |
| | 44 | 1260050 | Boccola | 1 |
| | 45 | 1040710 | Guarnizione OR | 1 |
| | 46 | 1344060 | Coperchio | 1 |
| | 47 | 1260780 | Vite | 1 |
| | 48 | 880840 | Guarnizione OR | 1 |
| | 49 | 1343900 | Tappo | 1 |
| | 50 | 880111 | Linguetta | 1 |
| | 51 | 1341070 | Cuscinetto | 1 |
| | 52 | 480890 | Anello | 1 |
| | 53 | 111120 | Anello | 1 |
| | 54 | 1341080 | Anello | 1 |
| | 55 | 1340060 | Biella | 3 |
| | 56 | 1340080 | Spina | 3 |
| | 57 | 1340070 | Pistone | 3 |
| | 58 | 1260460 | Tenuta olio | 3 |
| | 59 | 600180 | Guarnizione OR | 3 |
| | 60 | 1341010 | Disco | 3 |
| | 61 | 1342740 | Pistone | 3 |
| | 62 | 1341020 | Rondella | 3 |

UN_CE_0974-CT



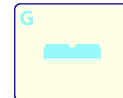
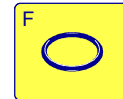
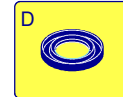
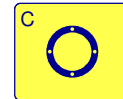
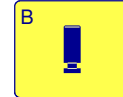
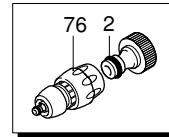
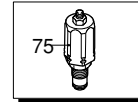
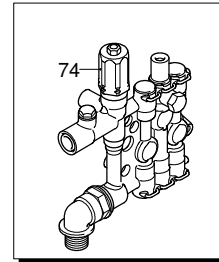
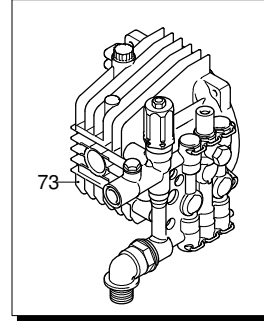
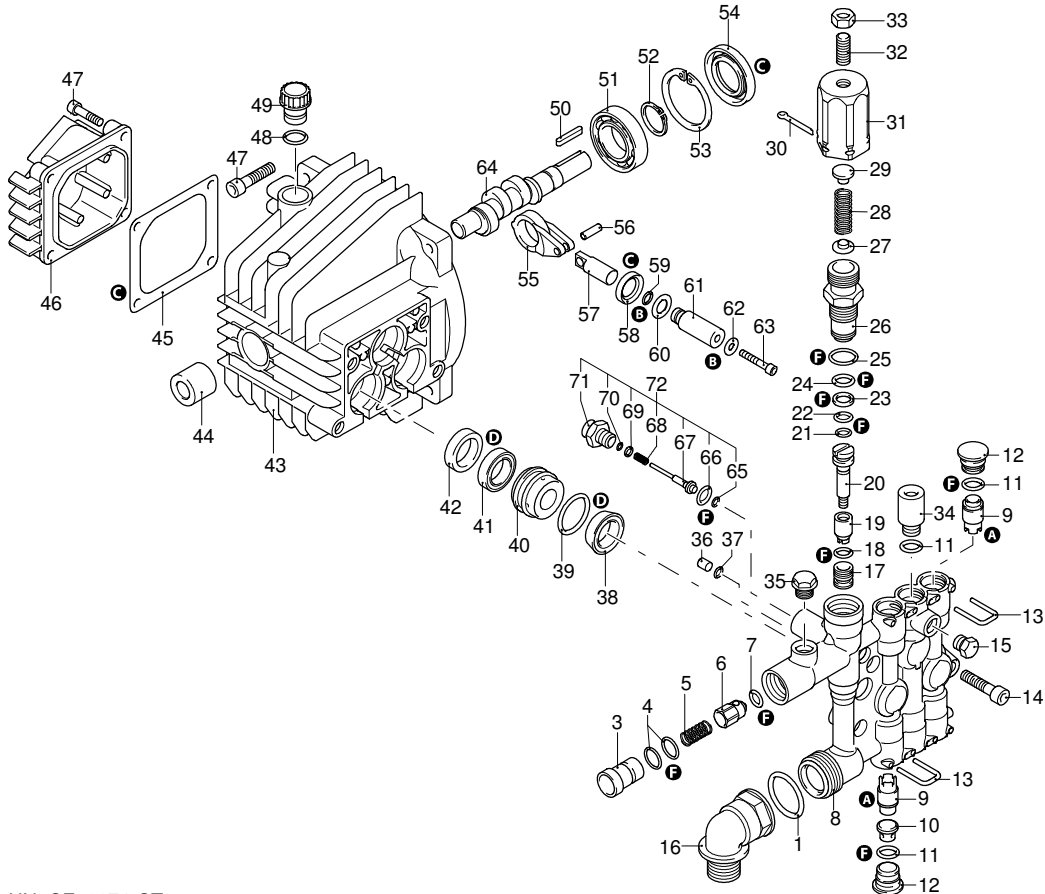
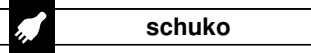
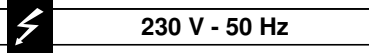
Modello 4590

Versione:

Matricola:

Codice: **24426**

17/07/2012



| Validità | Pos. | Codice | Denominazione | Q |
|----------|------|---------|-------------------------|---|
| | 63 | 850670 | Vite | 3 |
| | 64 | 1340170 | Albero | 1 |
| | 65 | 1120680 | Guarnizione OR | 1 |
| | 66 | 600180 | Guarnizione OR | 1 |
| | 67 | 2022040 | Asta | 1 |
| | 68 | 2021630 | Molla | 1 |
| | 69 | 2021650 | Rondella | 1 |
| | 70 | 1260820 | Guarnizione OR | 1 |
| | 71 | 1344830 | Raccordo | 1 |
| | 72 | 42580 | Kit TSS | 1 |
| | 73 | 1349297 | Premontaggio pompa | 1 |
| | 74 | 1349114 | Premontaggio testa | 1 |
| | 75 | 42579 | Kit valvola regolazione | 1 |
| | 76 | 3520360 | Raccordo | 1 |
| A | | 42566 | Kit valvole | 1 |
| B | | 2623 | Kit pistoni | 1 |
| C | | 1876 | Kit tenute olio | 1 |
| D | | 42567 | Kit tenute acqua | 1 |
| F | | 42568 | Kit guarnizioni | 1 |

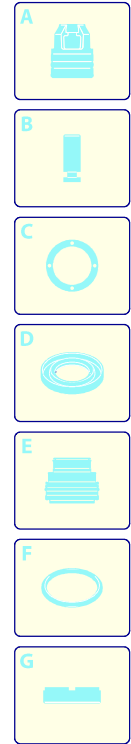
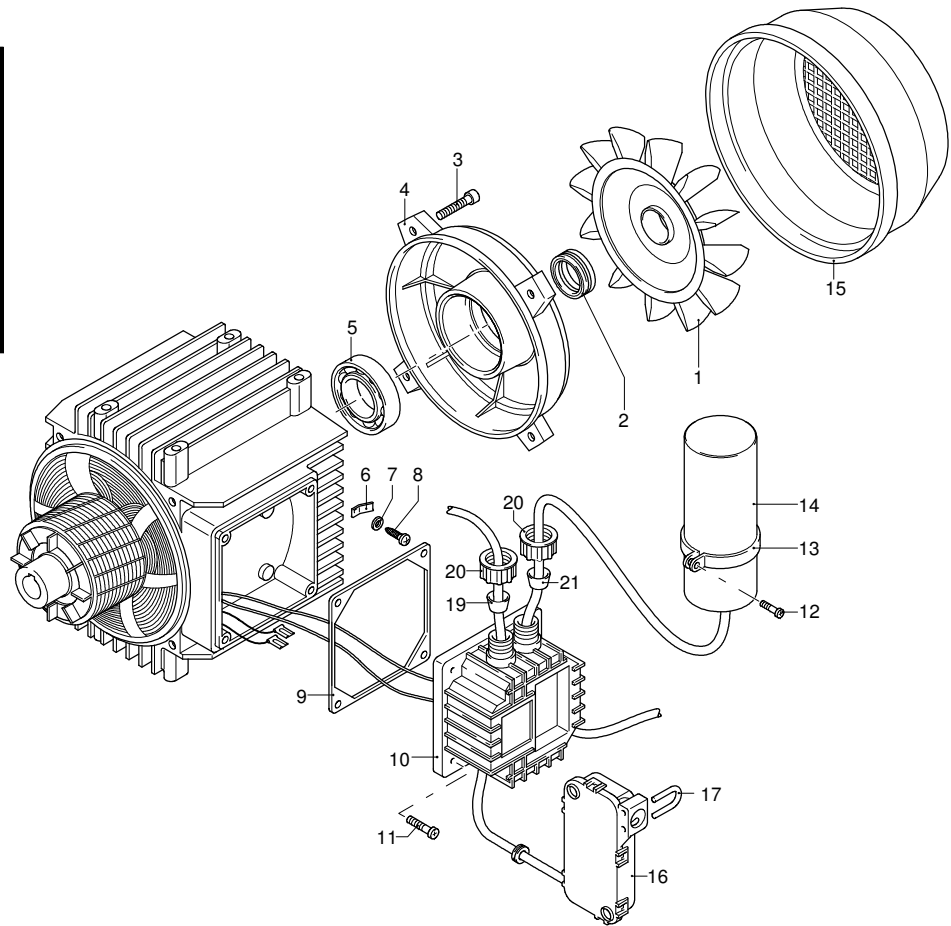
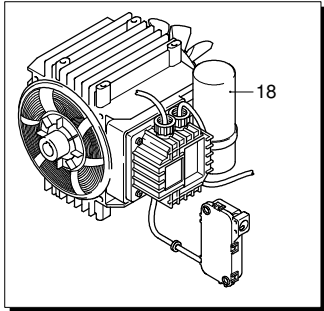


Modello 4590

Versione:
 Matricola:
 Codice: **24426**

17/07/2012

230 V - 50 Hz schuko



| Validità | Pos. | Codice | Denominazione | Q |
|----------|------|---------|--------------------------|---|
| | 1 | 1260300 | Ventola | 1 |
| | 2 | 1340350 | Tenuta | 1 |
| | 3 | 1260760 | Vite | 1 |
| | 4 | 1340320 | Scudo | 1 |
| | 5 | 1340340 | Cuscinetto | 1 |
| | 6 | 3523500 | Connettore | 1 |
| | 7 | 1262400 | Rondella | 1 |
| | 8 | 2020570 | Vite | 1 |
| | 9 | 1340780 | Guarnizione | 1 |
| | 10 | 1341831 | Scatola | 1 |
| | 11 | 1261560 | Vite | 4 |
| | 12 | 1261560 | Vite | 1 |
| | 13 | 1340280 | Fascetta | 1 |
| | 14 | 1263520 | Condensatore | 1 |
| | 15 | 1342040 | Copriventola | 1 |
| | 16 | 2029752 | Premontaggio scatola TSS | 1 |
| | 17 | 2022201 | Forcella | 1 |
| | 18 | 44534 | Motore | 1 |
| | 19 | 1340660 | Passacavo | 1 |
| | 20 | 1340640 | Ghiera | 2 |
| | 21 | 1340650 | Passacavo | 1 |

UN_CE_0976-CT

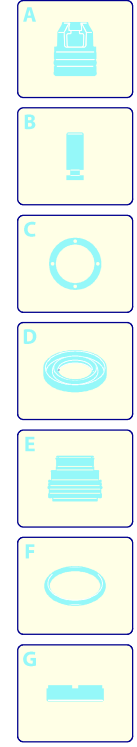
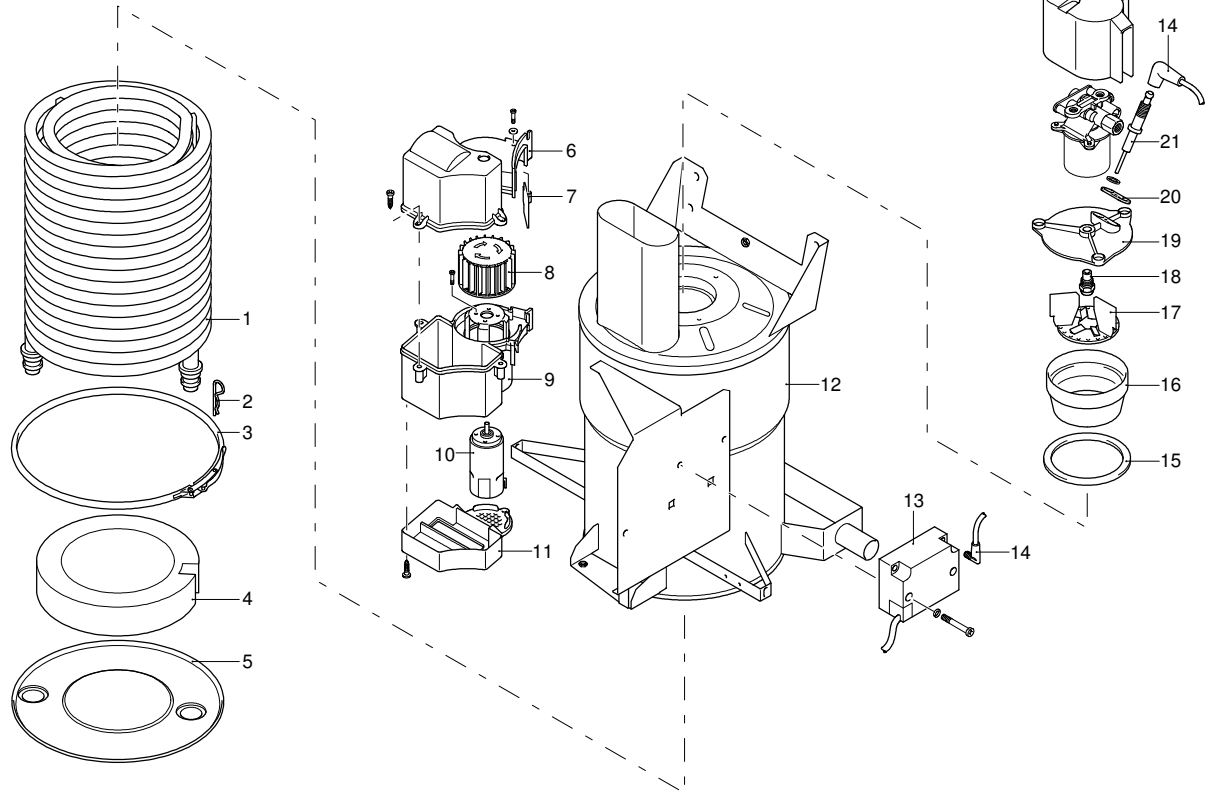


Modello 4590

Versione:
 Matricola:
 Codice: **24426**

17/07/2012

230 V - 50 Hz **schuko**



| Validità | Pos. | Codice | Denominazione | Q |
|----------|------|---------|---------------|---|
| | 1 | 3520630 | Resistenza | 1 |
| | 2 | 3520620 | Spina | 1 |
| | 3 | 3520610 | Fascetta | 1 |
| | 4 | 3520600 | Disco | 1 |
| | 5 | 3520590 | Disco | 1 |
| | 6 | 3520330 | Coperchio | 1 |
| | 7 | 3520790 | Valvola | 1 |
| | 8 | 3520800 | Ventola | 1 |
| | 9 | 3520320 | Scatola | 1 |
| | 10 | 3520810 | Motore | 1 |
| | 11 | 3520310 | Coperchio | 1 |
| | 12 | 3523570 | Caldaia | 1 |
| | 13 | 3520860 | Trasformatore | 1 |
| | 14 | 3520770 | Cavo | 1 |
| | 15 | 3520650 | Guarnizione | 1 |
| | 16 | 3520660 | Elemento | 1 |
| | 17 | 3520670 | Supporto | 1 |
| | 18 | 3520680 | Ugello | 1 |
| | 19 | 3520690 | Flangia | 1 |
| | 20 | 3520710 | Piastra | 1 |
| | 21 | 3520700 | Elettrodo | 2 |
| | 22 | 3520820 | Coperchio | 1 |



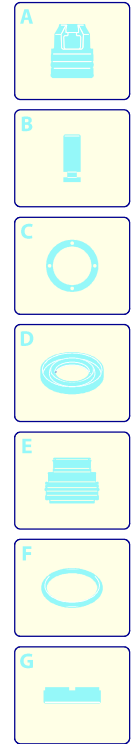
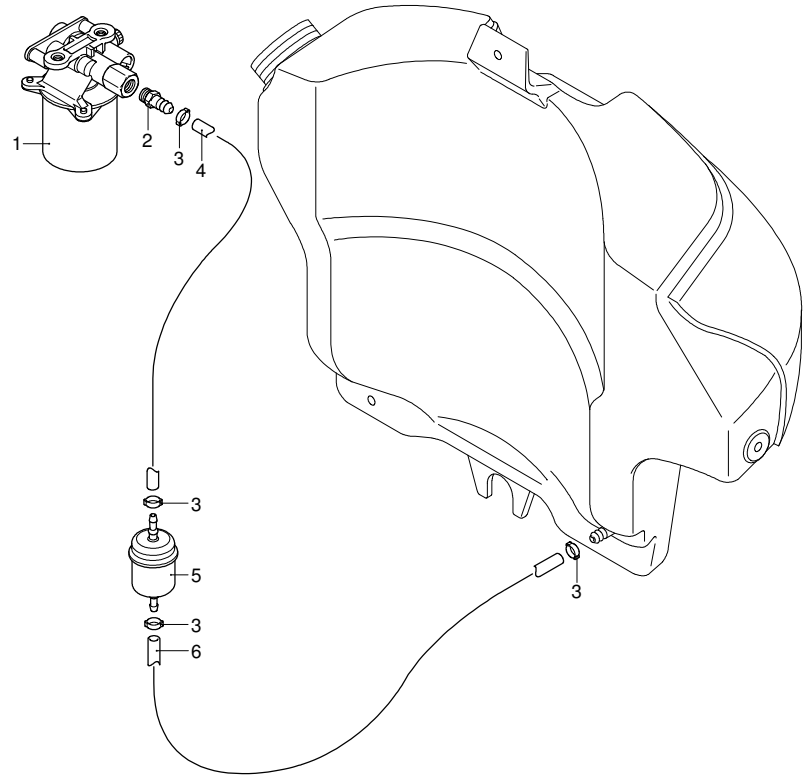
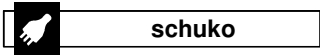
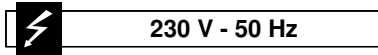
Modello 4590

Versione:

Matricola:

Codice: **24426**

17/07/2012



| Validità | Pos. | Codice | Denominazione | Q |
|----------|------|---------|---------------|---|
| | 1 | 3522760 | Pompa | 1 |
| | 2 | 3520730 | Portagomma | 1 |
| | 3 | 3520740 | Fascetta | 1 |
| | 4 | 3520750 | Tubo | 1 |
| | 5 | 3520760 | Filtro | 1 |
| | 6 | 3520750 | Tubo | 1 |



Modello 4590

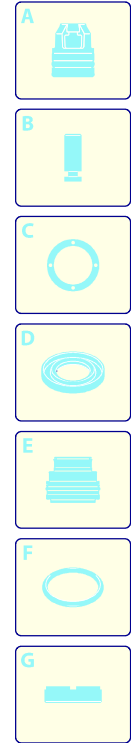
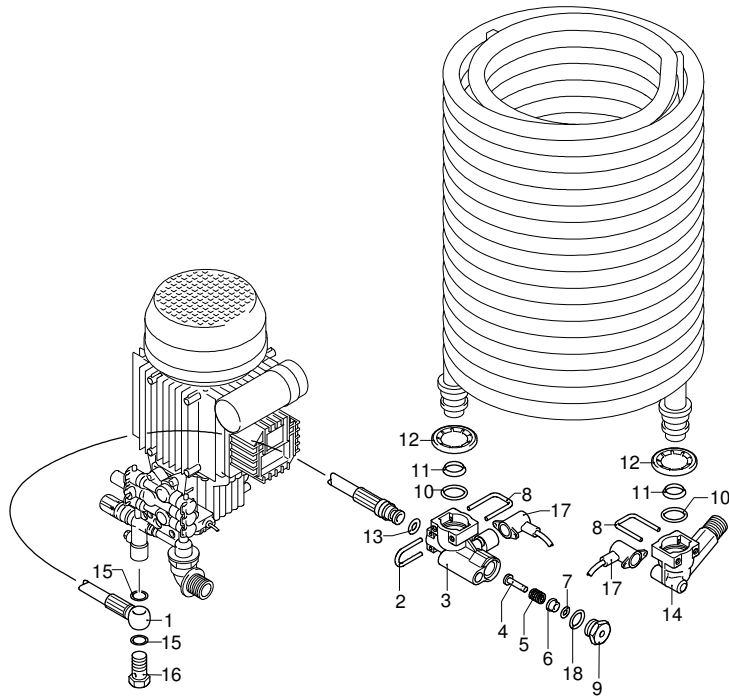
Versione:

Matricola:

Codice: **24426**

17/07/2012

230 V - 50 Hz **schuko**



| Validità | Pos. | Codice | Denominazione | Q |
|----------|------|---------|----------------|---|
| | 1 | 3521470 | Tube | 1 |
| | 2 | 3520490 | Forcella | 1 |
| | 3 | 3520420 | Raccordo | 1 |
| | 4 | 3520430 | Pistone | 1 |
| | 5 | 3520440 | Molla | 1 |
| | 6 | 3520450 | Boccola | 1 |
| | 7 | 3520460 | Guarnizione OR | 1 |
| | 8 | 3520510 | Forcella | 2 |
| | 9 | 3520480 | Tappo | 1 |
| | 10 | 3520500 | Guarnizione OR | 2 |
| | 11 | 3520540 | Anello | 2 |
| | 12 | 3520240 | Rondella | 2 |
| | 13 | 3520410 | Guarnizione OR | 1 |
| | 14 | 3520530 | Raccordo | 1 |
| | 15 | 3520580 | Rondella | 1 |
| | 16 | 3520570 | Vite | 1 |
| | 17 | 3520930 | Termostato | 2 |
| | 18 | 3520470 | Guarnizione OR | 1 |



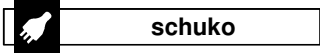
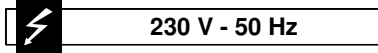
Modello 4590

Versione:

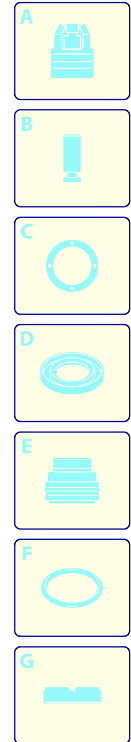
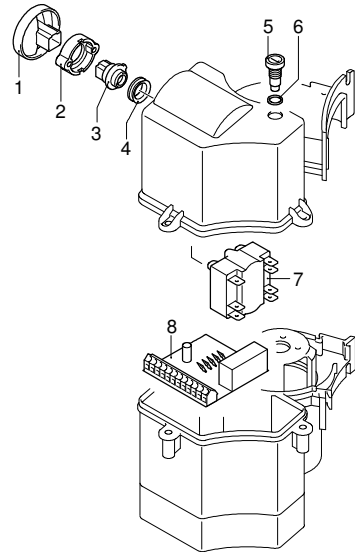
Matricola:

Codice: **24426**

17/07/2012



| Validità | Pos. | Codice | Denominazione | Q |
|----------|------|---------|----------------|---|
| | 1 | 3520270 | Manopola | 1 |
| | 2 | 3520280 | Spessore | 1 |
| | 3 | 3520300 | Elemento | 1 |
| | 4 | 3520290 | Guarnizione OR | 1 |
| | 5 | 3520340 | Guarnizione OR | 1 |
| | 6 | 3520350 | Portafusibile | 1 |
| | 7 | 3520850 | Interruttore | 1 |
| | 8 | 3520840 | Scheda | 1 |





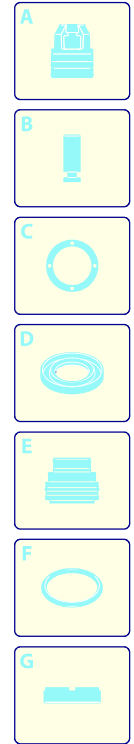
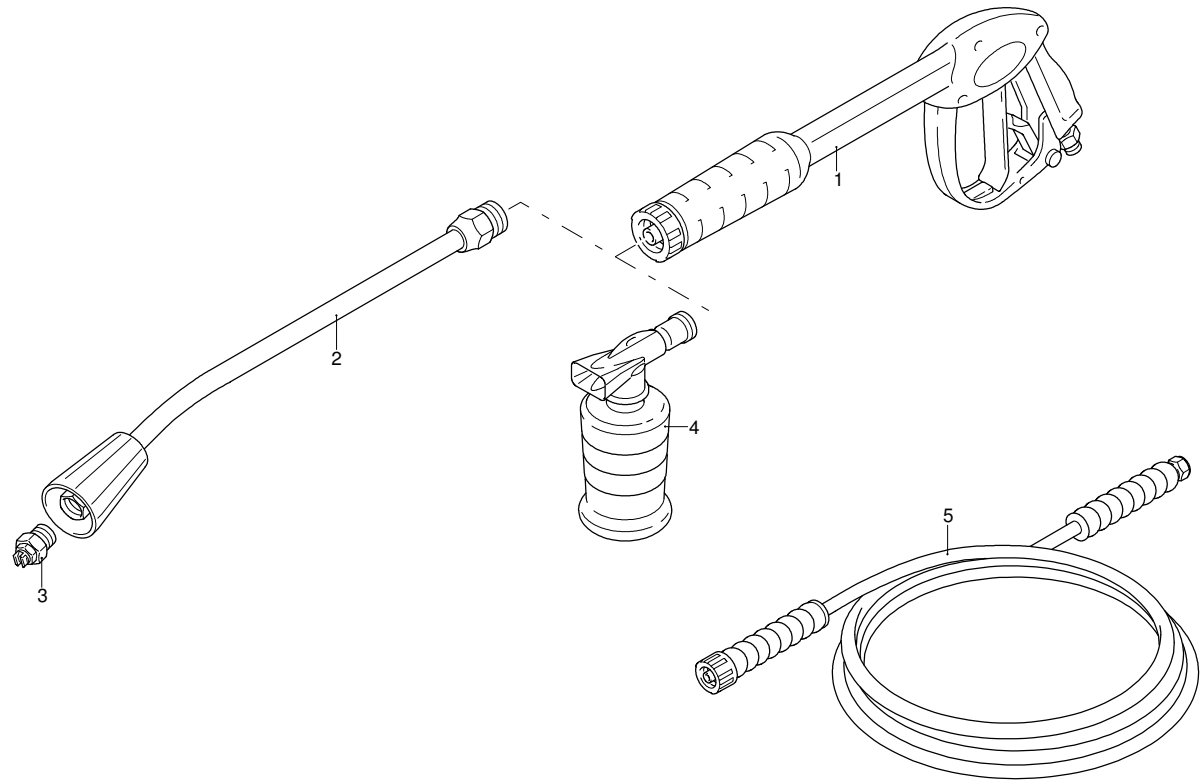
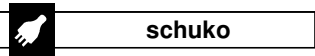
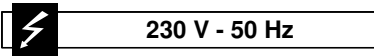
Modello 4590

Versione:

Matricola:

Codice: **24426**

17/07/2012



| Validità | Pos. | Codice | Denominazione | Q |
|----------|------|---------|---------------------|---|
| | 1 | 41047 | Pistola | 1 |
| | 2 | 50690 | Lancia | 1 |
| | 3 | 3104 | Ugello | 1 |
| | 4 | 40320 | Serbatoio | 1 |
| | 5 | 3520550 | Tubo alta pressione | 1 |